



MEASURING SYSTEMS
FOR CONTINUOUS CASTING MACHINES

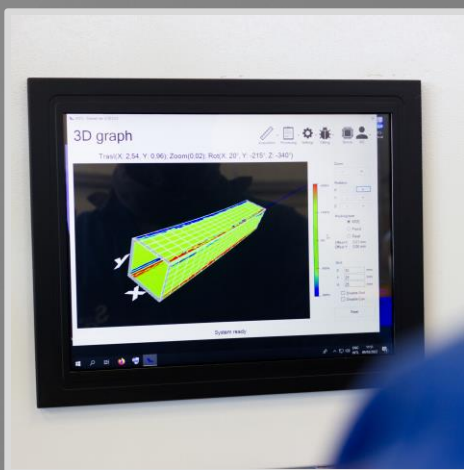




MCS

MOULD CHECKER STATION

MCS is a fixed installed and fully automatic station for mould internal geometry scanning (Using laser technology). It can be used in CCM Workshop for mould inspection (Used mould check or new mould acceptance) or by copper mould producers for product quality check and certification. MCS support up to 6 mould loading for automatic sequential scanning.



FEATURES

- Scanning of the whole internal mould's surface
- Fully automatic station for CCM Work-shop or Copper Mould producers
- Wide measurement range by interchangeable measure heads
- Able for Billet, Bloom, Round and Octogonal
- Measure database with measures comparison functions



MCS supports up to 6 mould loading for automatic sequential scanning. It performs a complete mould checking due to the 360 degrees scanning. It can check mould's shape, squareness, ovalization, bending radius, corner radius, and more.

MCS station is available in two versions: horizontal mould loading (MCS-H) or vertical mould loading (MCS-V). Both versions support interchangeable measure heads for a wide range of measures.

TECHNICAL DATA

Taperform supported	Round Square, Rectangular and Octogonal. Diagonal range from 130 mm to 500 mm (Using different measure heads)
Accuracy	+/- 0.02 degrees
Technology	Triangulation laser sensor
Repeatability	+/- 0.03 mm
Longitudinal measurement step	From 5 to 50 mm
Measurement time (1000 mm taper length)	10' (25 mm step) / 50' (5 mm step)
Operator Interface	Stand-alone totem with touch display PC
Mould loading capacity	Up to 6

BENEFITS

- Removal of the defects due to the Mould
- Break-out reduction
- Mould life optimization
- Planning of the CMM stop for mould overhauling
- New mould check
- Product quality
- Mould life
- Maintenance cost reduction



A. PACINOTTI, 26 - 57025 PIOMBINO (LI)
+39 0565 223439
SIDER@INFOL.IT